

THE *Light Shade* STUDIO

PRESS RELEASE:
FOR IMMEDIATE RELEASE

MADE IN BRITAIN

AUGUST 2018

British designers and manufacturers of bespoke and luxury lampshades unveil their AW18 Collection, with a selection of eclectic new fabrics.



Above - GATSBY fringed shades (left) and HUXLEY pendants (right). Below - HURLEY crystal pendant.

The Light Shade Studio will launch their stylish AW18 Collection at DECOREX International 2018, alongside iconic sub-brand, David Hunt Lighting.

Transcending modern design, each shade is lovingly and individually crafted by hand in Oxfordshire. The British manufacturer is delighted to showcase their new pieces on stand D37; including GATSBY, an opulent pendant finished with luxurious high-quality fringe in ivory or warm grey.

Also new for AW18 is the eclectic HUXLEY pendant, which emits a wonderfully diffused, soft light

to the surrounding area. The contemporary style of HUXLEY is set off with a finish of either satin chrome or gold and a coordinating cable to complete the modern aesthetic.

Introducing statement crystal, HURLEY is sold complete with the shade and metallic lining, warm bronze or stylish silver. Featuring polished chrome detailing, HURLEY is offered with a matching wall light to complete the look.

The AW18 Collection consists of pendants and lamp shades in various sizes, offered in an extensive library of colours and

fabrics. The classic 100% SILK dupion is a natural handwoven fabric, unmistakably evident by a richness of colour and texture. A remarkable new range of SATIN and LINEN fabrics will also be presented at Decorex; offering synergy between texture and longevity.

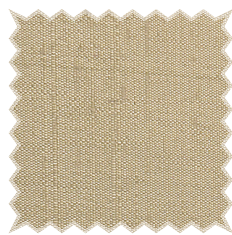


SILK DUPION

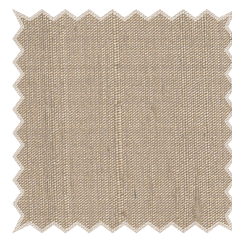
(Price Band A)



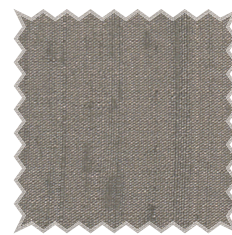
15
Ivory



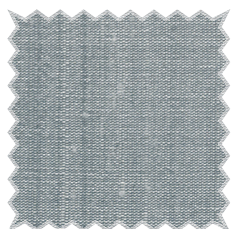
41
Sea Mist Gold



01
Taupe



72
Truffle



39
Silver Grey



37
Charcoal



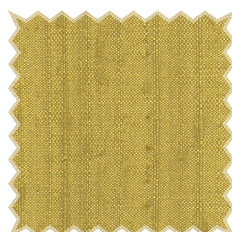
04
French Navy



22
Black



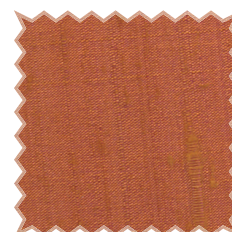
71
Peony



35
Citron



76
Olive Green



11
Firefly Orange

Our 100% silk dupion is a natural handwoven fabric, unmistakably evident by a richness and variety of colour and texture. The fibre's triangular structure acts as a prism that refracts light, giving the surface of the fabric a lustrous sheen. As a natural fibre the texture and slub of silk dupion is characterised by variations and irregularities in the shade and weave.

SATIN

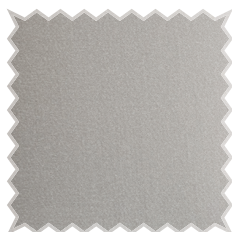
(Price Band A)



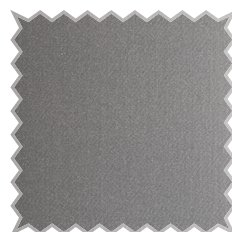
16
Swan



18
Almond Cream



19
Cloud



21
Graphite



20
Copper Oxide

A soft and smooth fabric produced using a combination of cotton and polyester fibres, combed to create a luxurious satin finish.

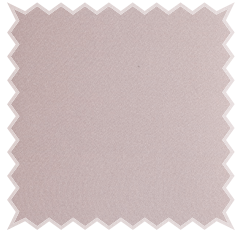
SATIN

(Price Band B)



05

Teal



06

Ballet Pink

Our alluring soft ballet pink and teal satin fabrics are woven using 100% natural silk fibres.

LINEN

(Price Band B)



07

Bone



08

Limestone



09

Marshmallow



10

Slate Grey

Made from 100% linen, our new fabric embodies an elegant and subtle matt sheen. Linen is a natural fabric made from the flax plant. One of nature's strongest fibres, its threads have variable lengths which contributes to its strength and longevity.

SHADE LININGS



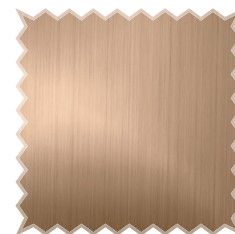
-GD

Gold Metallic



-SI

Silver Metallic



-BZ

Bronze Metallic



-WH

White